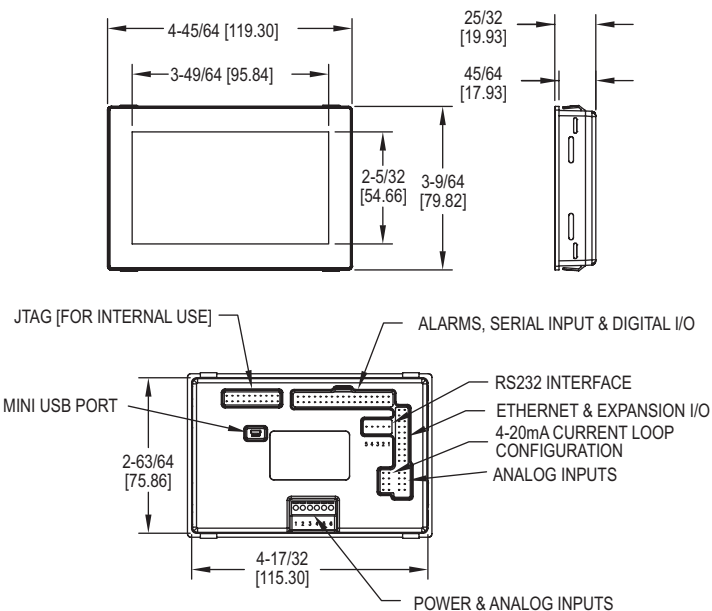


GRAPHICAL USER INTERFACE PANEL METER

4.3" (109 mm) Touch Screen Display, Fully Customizable



The **Series SPPM2 Graphical User Interface Panel Meter** is a configurable, full-color 4.3" (109 mm) touch screen display that can be used in a variety of applications. By using the free Windows® based Interface Panel Design Studio software, users can personalize the display with buttons, switches, and analog and digital scales to suit their needs. A development kit is also available, which includes a development board with buttons, dials, LEDs, and screw terminals to test the functionality of all inputs and outputs.

FEATURES/BENEFITS

- Large 4.3" touch screen display can be powered from USB or 5-30 VDC supply
- Free design software allows users to drag and drop elements onto the screen to quickly develop their specific interface
- Accepts up to 4 analog inputs, 8 digital I/O, 4 PWM outputs, and 2 open collector alarm outputs

APPLICATIONS

- Lift station pump control
- Room condition monitoring display
- Walk-in refrigeration/freezer control

MODEL CHART

Model	Description
SPPM2-43	4.3" interface panel
SPPM2-43-D	4.3" interface panel with development board

SPECIFICATIONS

Inputs: Mini-USB, 6-line screw terminal analog, 4 x ± 40 V, or 4-20 mA, 8 x digital I/O.

Outputs: 4 x PWM, 2 x alarms (open collector).

Accuracy: $\pm 0.05\%$ ± 0.1 mV (typ).

Resolution: 0.04 mV (max) or 4 decimal places.

Power Supply: USB port or 5-30 VDC.

Current Consumption: 400 mA at 5 VDC.

Display: 4.3" (10.9 cm) TFT LCD with 262k colors.

Display Resolution: 480 x 272 pixels.

Sampling Rate: 10 samples/s.

Temperature Limits: 32 to 104°F (0 to 40°C).

Warm Up: 15 s.

Mounting: Panel mount.

Electrical Connection: Multi-pin DIL's, 1 mini-USB, and 1 RS232.

Software Requirements: Compatible with Windows® 7, Windows® 8 and Windows® 10.

Weight: 6.7 oz (181 g).

Approvals: CE.

DEVELOPMENT BOARD SPECIFICATIONS

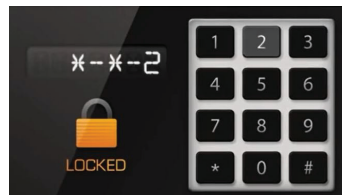
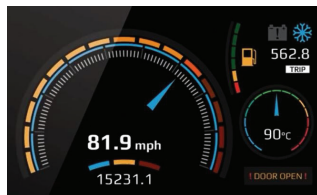
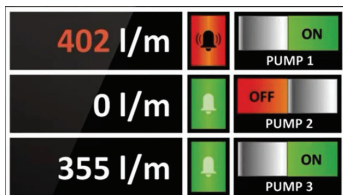
Inputs: 4 x ± 5 VDC.

Outputs: 8 x digital I/O's, 4 x PWM outputs.

Serial Communication: RS232.

Power Supply: USB port or 5-30 VDC.

Weight: 19.7 oz (560 g).



Windows® is a registered trademark of Microsoft Corporation.